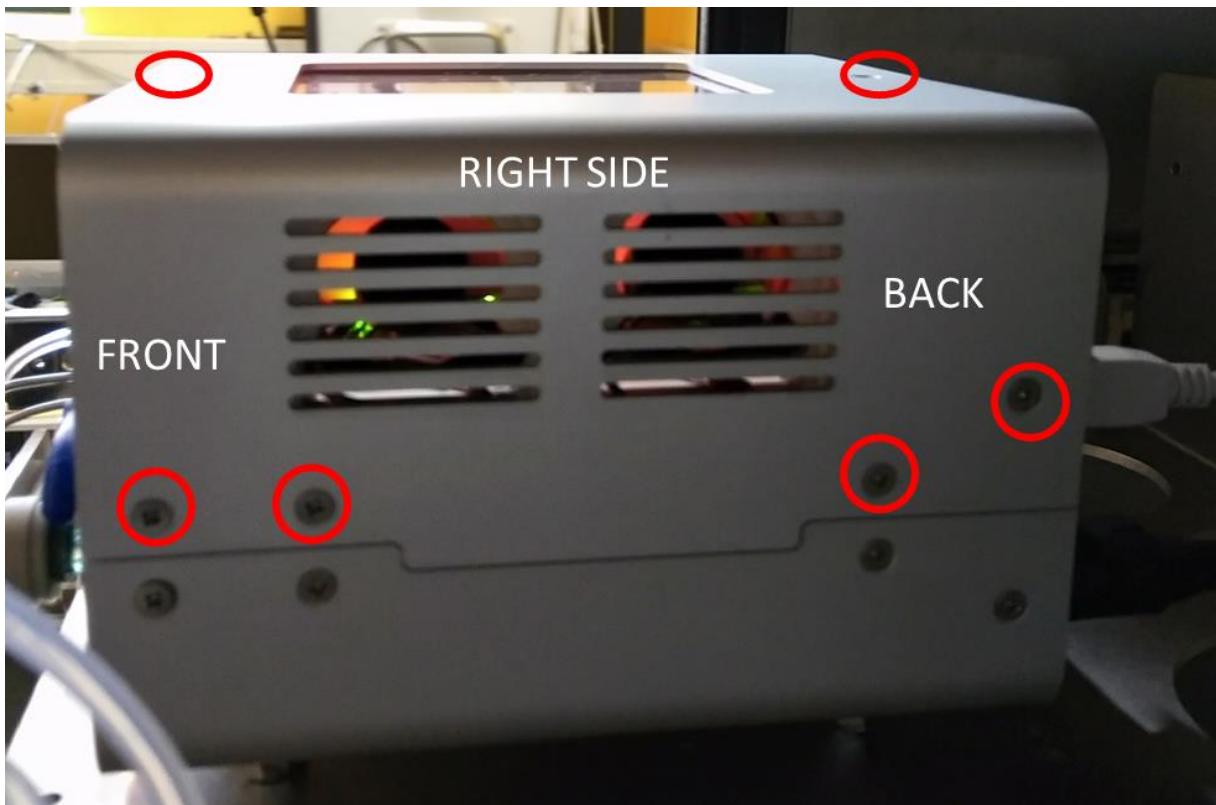
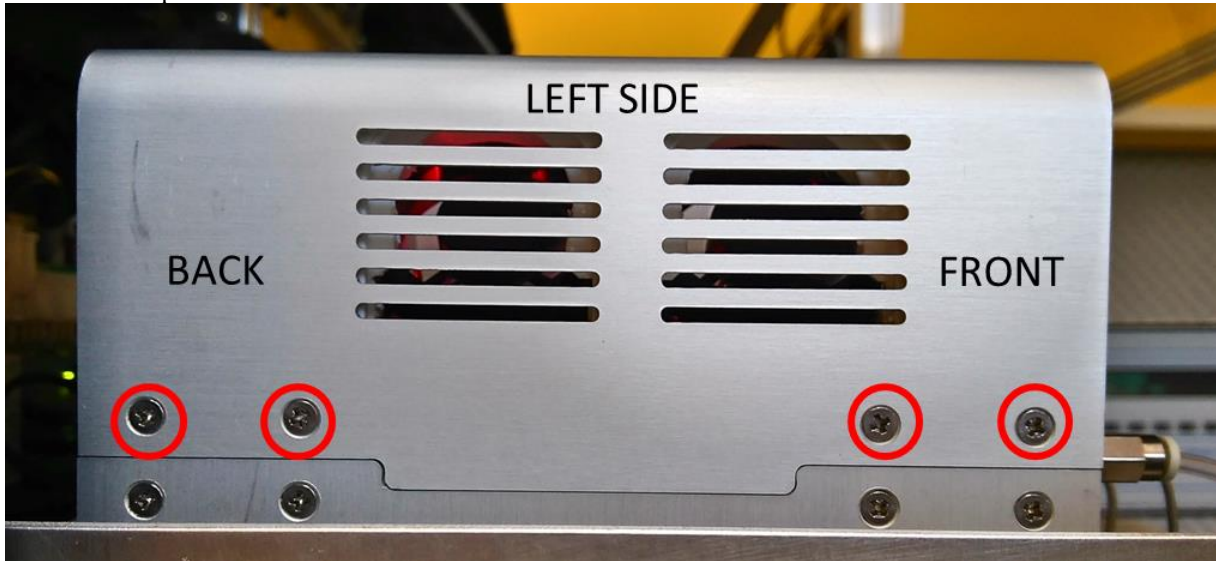


BTEX module - Replacing the MEMS

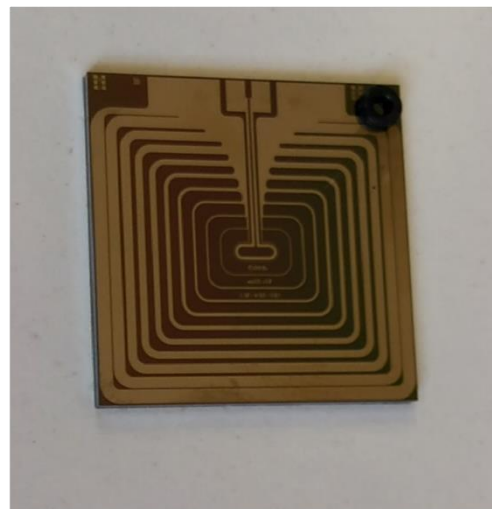
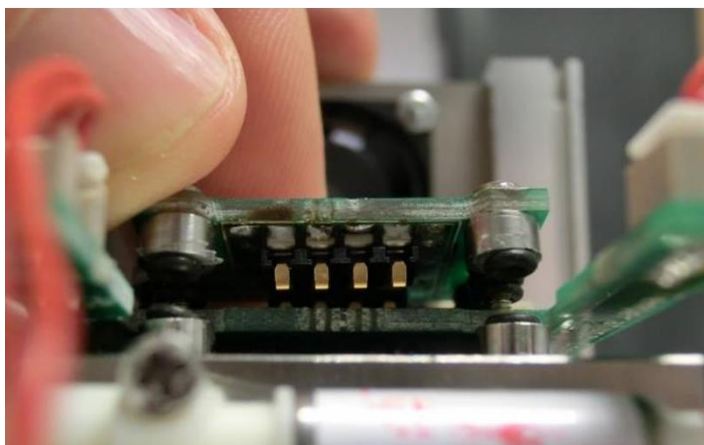
- 1- Tools you need
 - a small Phillips screwdriver
- 2- Remove the GC from the airpointer as explained in the procedure BTEX1
- 3- Unscrew the 4 top screws on each side of the GC and the 2 screw on top of the GC in order to detach the top cover



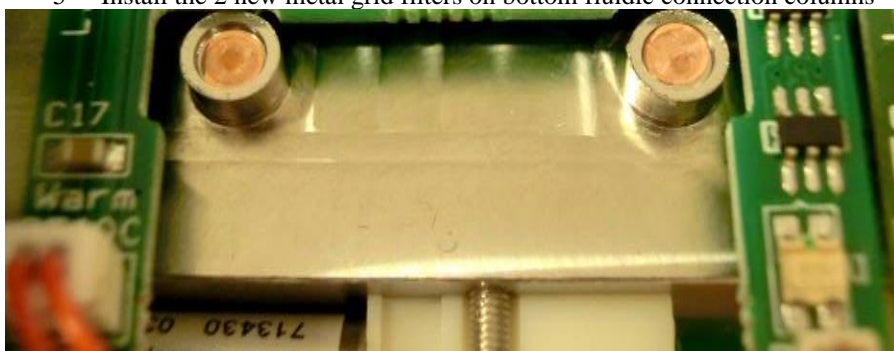
- 4- Loosen the 2 screws on top of the connect board in order to be able to slide the column out of the GC



You don't need to remove the screws completely. When you slide the MEMS column out, be careful not to lose the o-rings



- 5- Install the 2 new metal grid filters on bottom fluidic connection columns



- 6- Install the 2 new O-Rings on bottom fluidic connection columns, above the metal grid filters



- 7- Slide in the new column, taking care not to lose the o-rings, and tighten the screws of the board above to keep the column in place

- 8- Put back the top cover