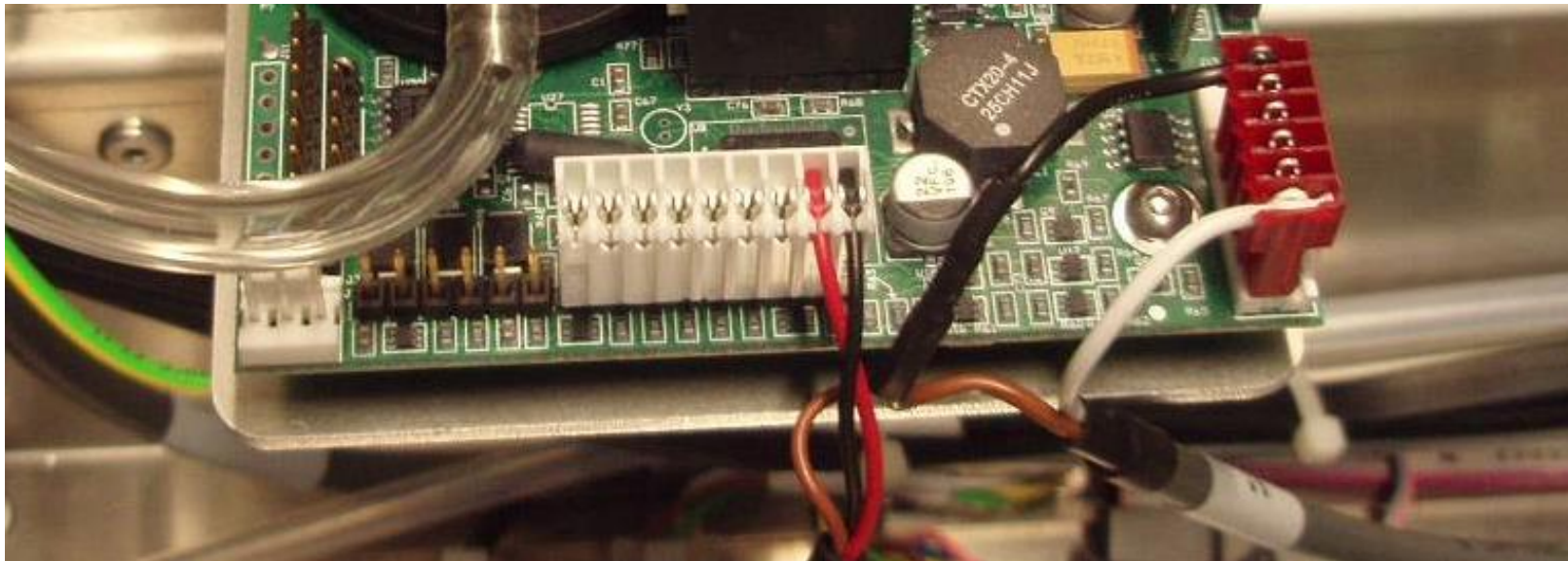




airpointer[®] PM module: MultiPM



Parameters

Actual MultiPM Values

Parameter	Value	Unit
PM2.5	7.2	µg/m ³
PM2.5_all	7.2	µg/m ³
PM10	9.9	µg/m ³
PM10_all	9.9	µg/m ³
Alarms	0.0	-
InletTemp	49.9	°C
PowerToInlet	7.9	%

...other particle sizes optional

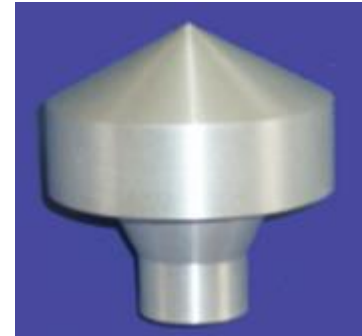
Calibration

The zero calibration can be done by installing a DFU filter on the sample inlet

For the span value, the multiPM need to be calibrated by comparison with a type-approved, calibrated PM monitor

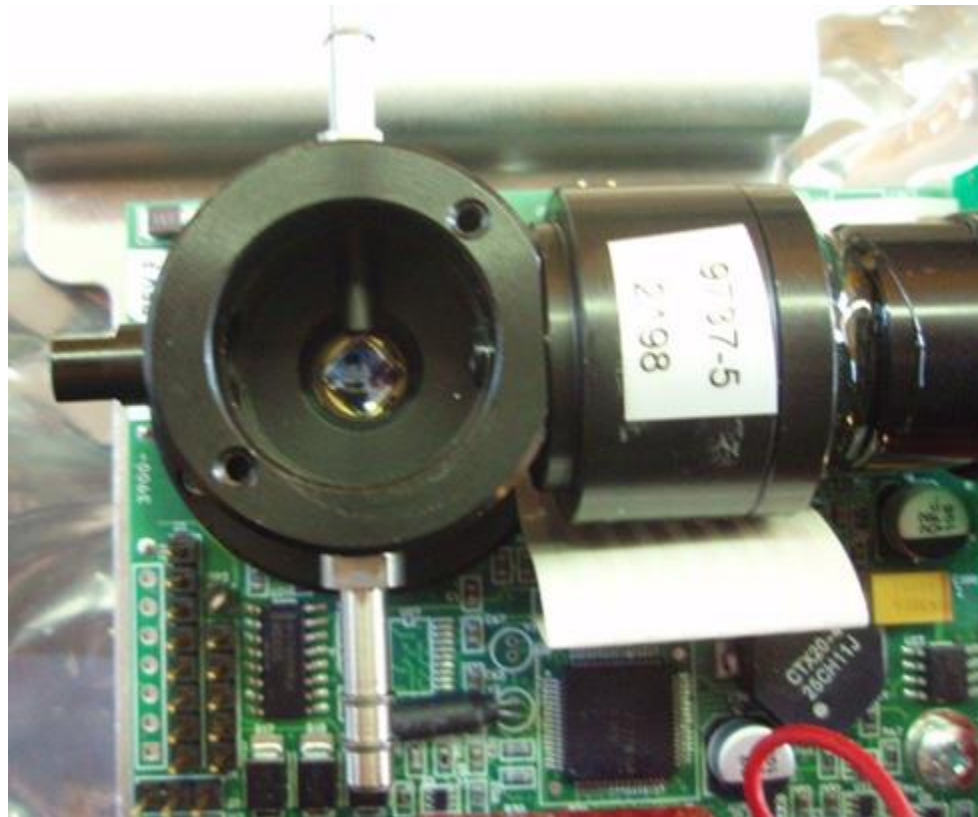
Preventive maintenance

- TSP inlet and sampling tube cleaning
- DFU-Filter
- Flow control and capillary check
- Chamber cleaning



Troubleshooting

Results are absent or erratic
→ Dirty inlet and/or chamber



Thank you for your attention!