

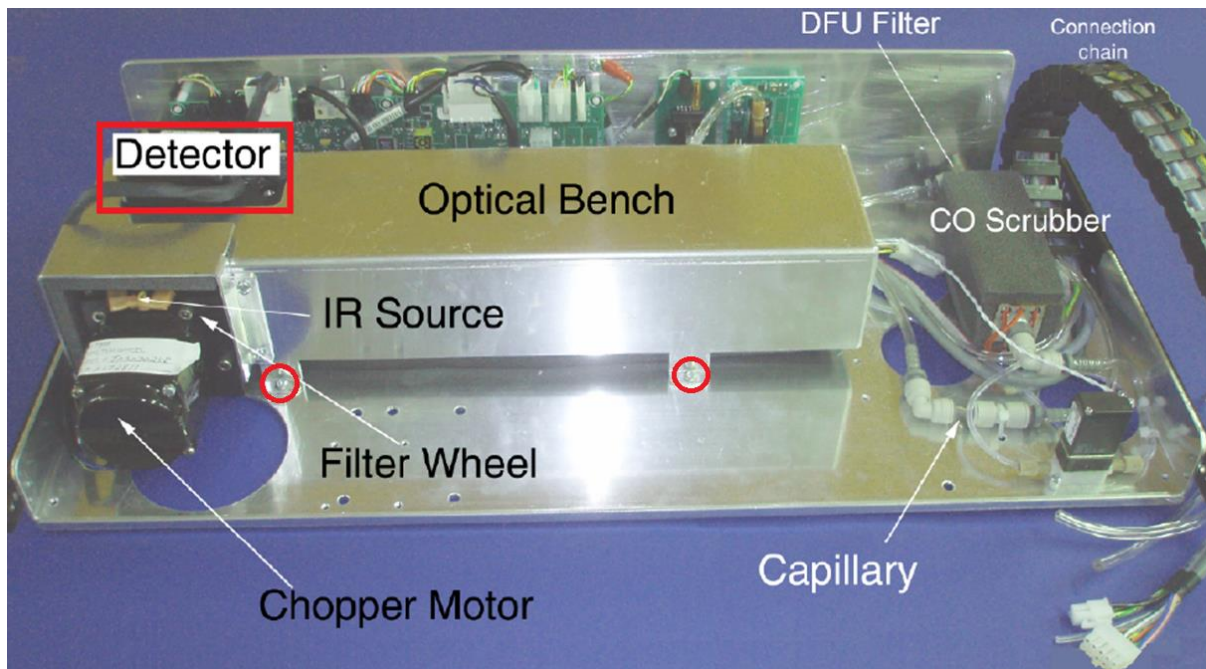
CO module (T) – Replacing the detector

1- Tools you will need:

- Medium size Philips screwdriver
- 7/64" and 6/32" hexagonal keys

2- Turn off and unplug the airpointer

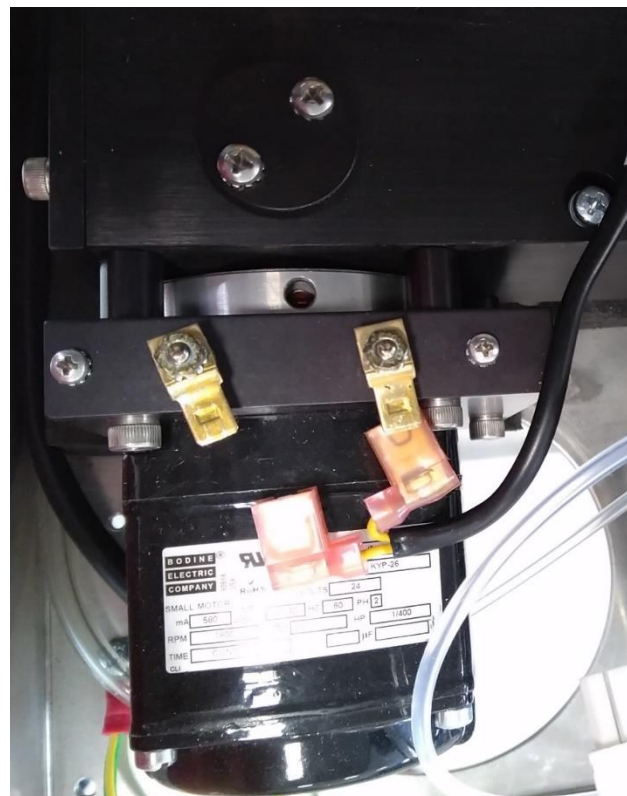
3- Pull the CO module out and locate its detector. Unscrew the 4 screws holding the aluminium cover of the optical bench and remove the cover



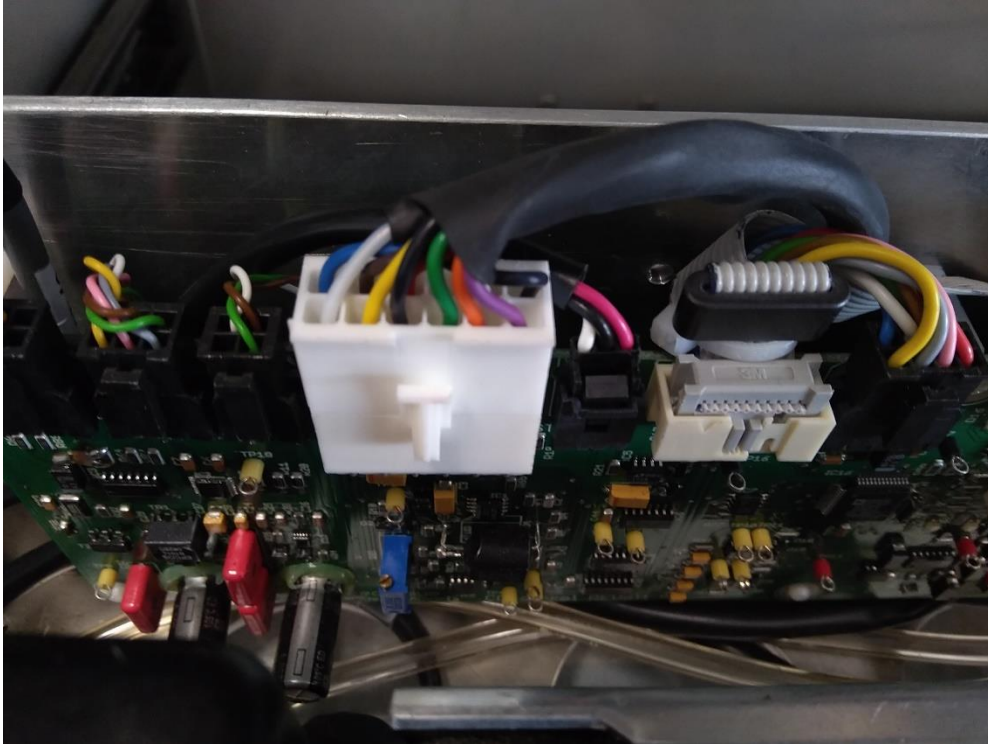
- 4- Remove the 2 hexagonal screws holding the cover of the detector and remove the cover



- 5- Disconnect the 2 cables linking the detector to the IR source



- 6- Disconnect the 12-pin cable linking the detector to the CO control board



- 7- Remove the 2 hexagonal screws holding the detector to the CO bench



- 8- The CO detector can now be removed from the bench.
- 9- Install the new detector, by repeating steps 1 to 6 in the reverse order