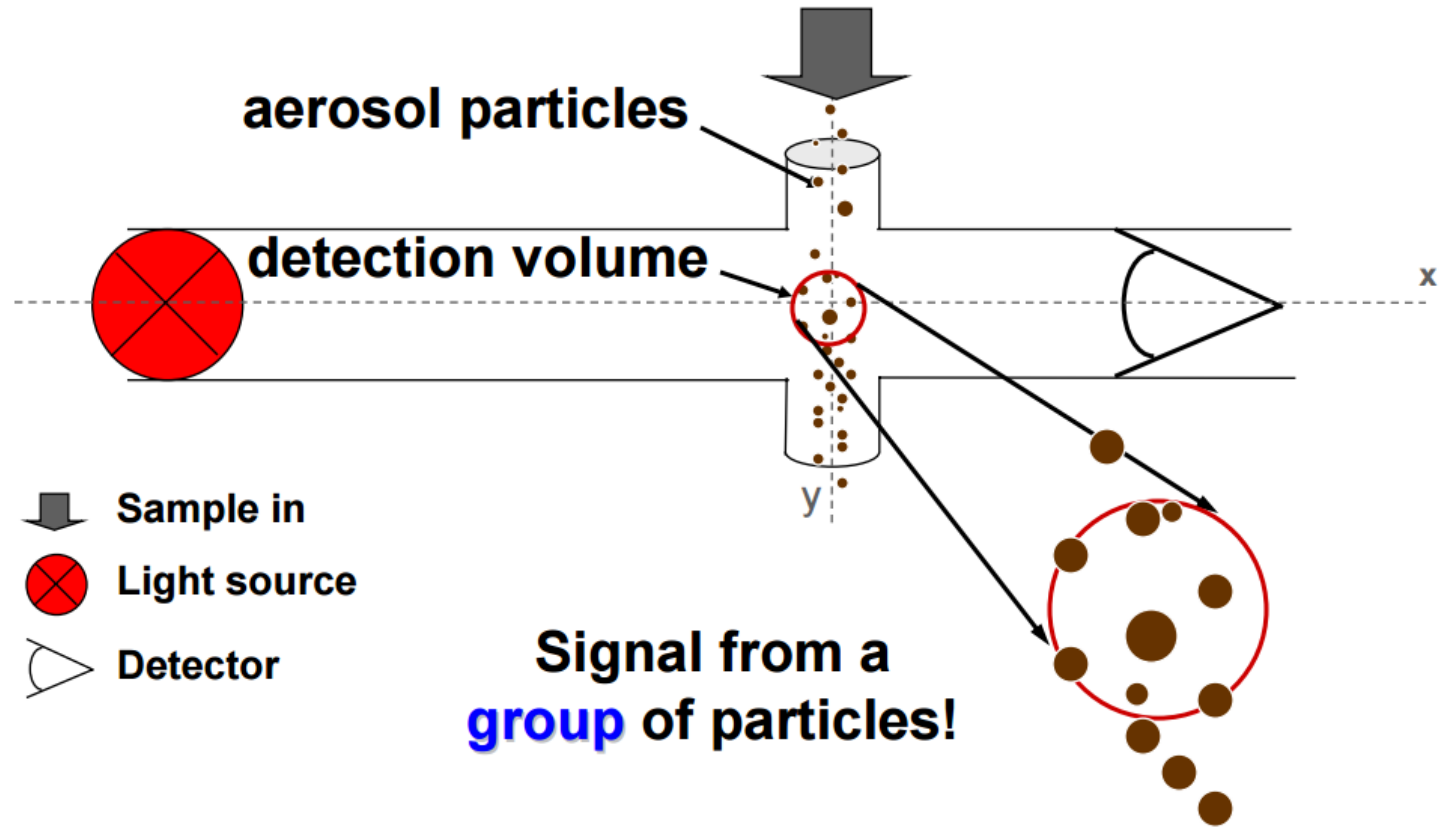


# airpointer<sup>®</sup> PM module: Grimm EDM180

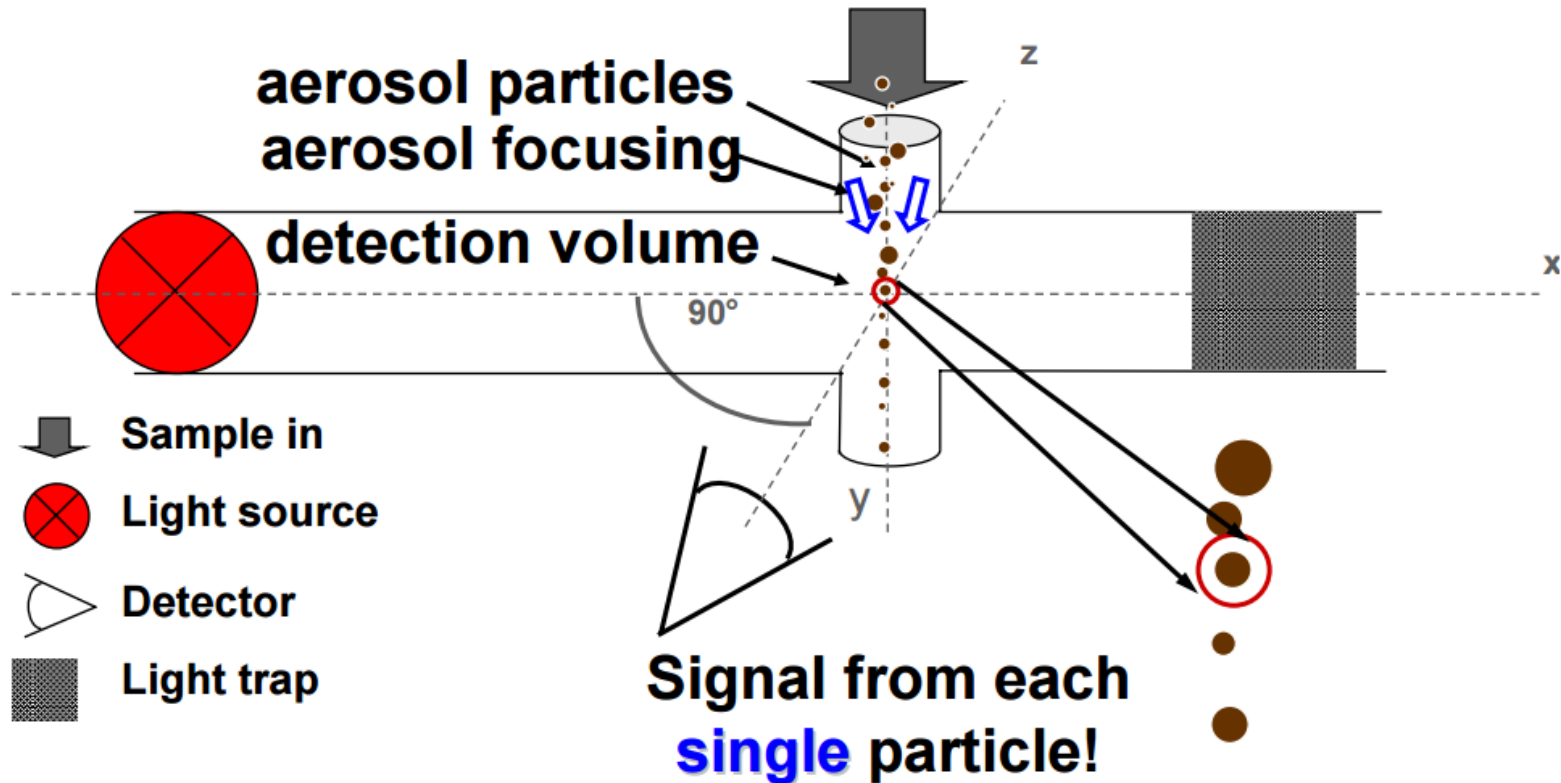


# Nephelometer



Therefore, particles should all be the same size → size-selective inlet required → 1 particle size at a time

# Light scattering photometer



Grimm180/T640: no need for size-selective inlet  
→ measurement of several sizes particle simultaneously

# Parameters

## Raw Values Page Src2 180-D PM V7.8 Avg

Number	Parameter	Value	Unit
S2C1	PM10	21.0	$\mu\text{g}/\text{m}^3$
S2C2	PM2.5	15.8	$\mu\text{g}/\text{m}^3$
S2C4	TSP	21.0	$\mu\text{g}/\text{m}^3$
S2C8	Volume	0.0002	$\text{m}^3$

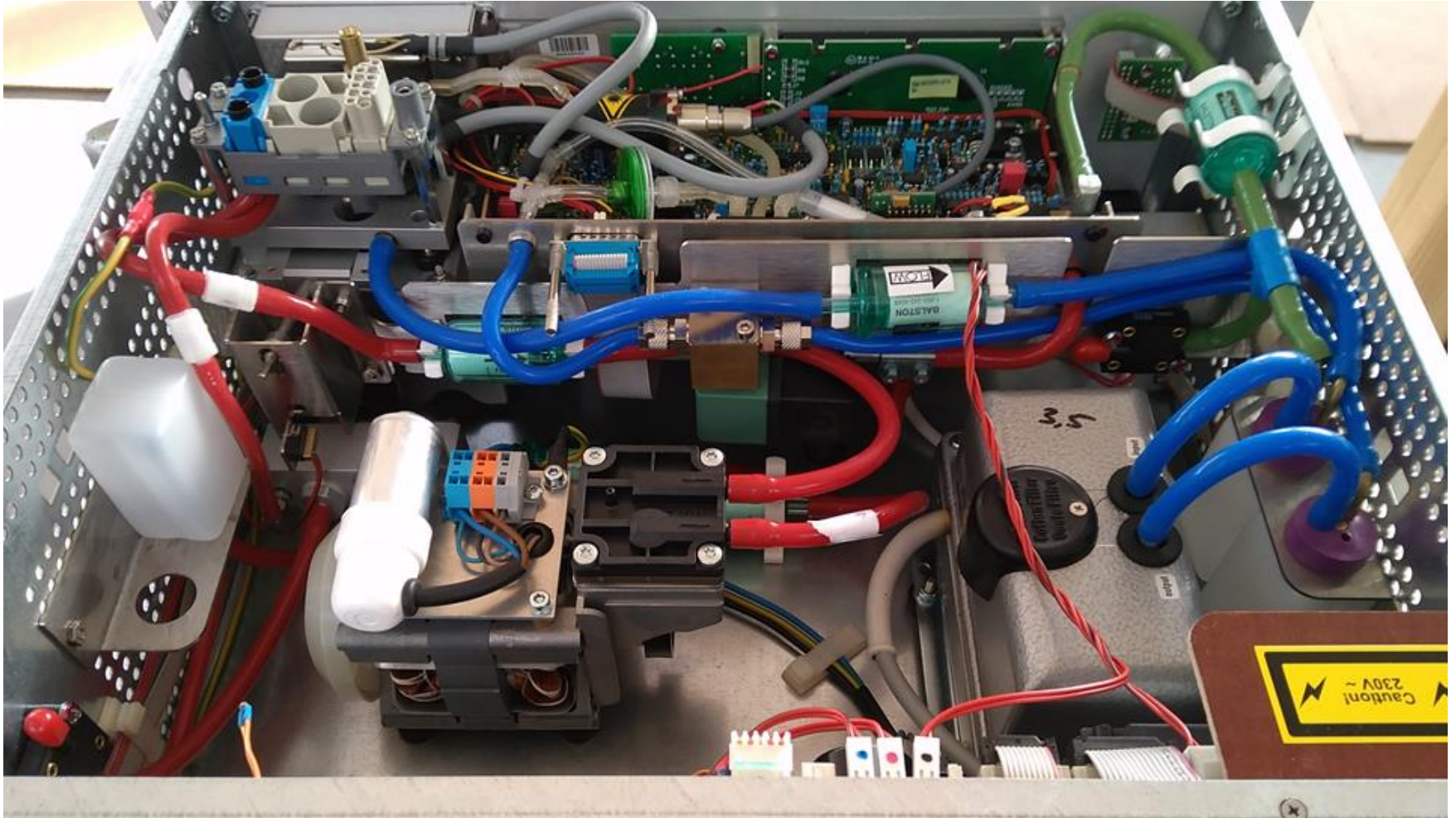
# Calibration

The zero calibration can be done by installing a DFU filter on the sample inlet

For the span value, the multiPM need to be calibrated by comparison with a type-approved, calibrated PM monitor

# Maintenance

Service normally performed every 12-18 months by Grimm together with the recalibration, but routine check can be performed by user



# Routine maintenance

- Check the sample head and the sample pipe and clean if necessary
- Check the air inlet nozzle and if necessary clean with pressurized air ( $< 3$  bar)
- Check that the pressure gauge shows a value between  $-55$  kPa and  $-65$  kPa
- Check the flow and check the absence of leak
- Check the zero with a DFU filter

# Troubleshooting

Leaks: make sure the red dot on the sample inlet is in front and exactly aligned with the Grimm180 cover

Warning: drier not ok  
→ Replace the o-rings of the sample pipe





Thank you for your attention!