

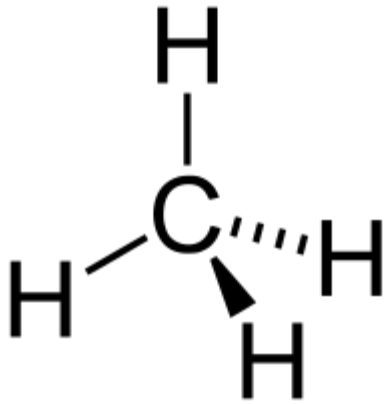


airpointer[®] PM module: Mocon Series 9000 NMHC



NMHC: Non Methane HydroCarbons

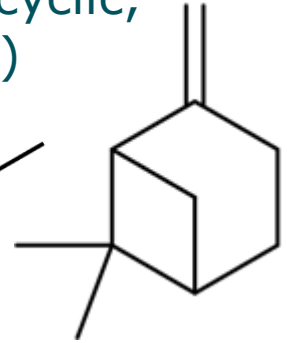
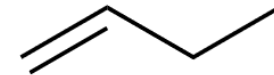
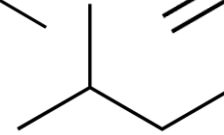
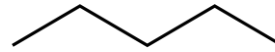
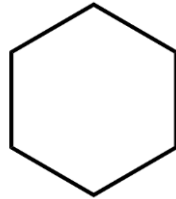
Methane:



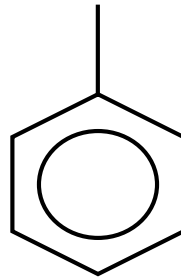
Typical concentration
~ 2 ppm

All VOCs except Methane:

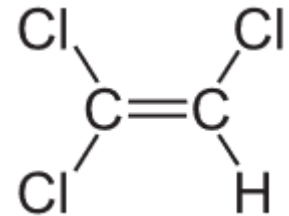
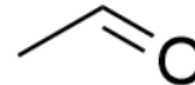
- aliphatics (linear, branched, or cyclic, saturated or not, terpenes)



- aromatics

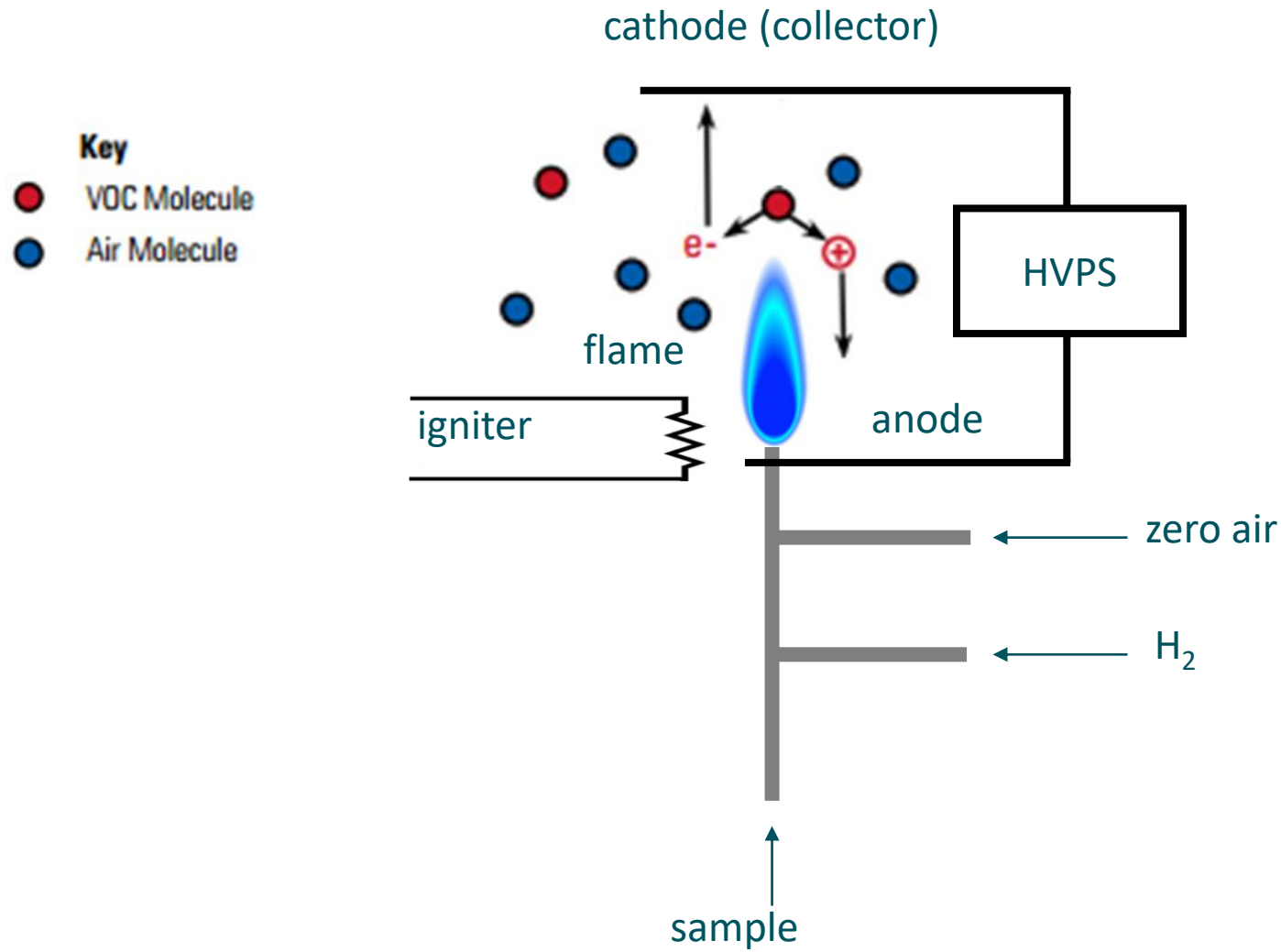


- Oxygenated, chlorinated VOCs



Typical individual concentration at the ppb level

Flame Ionization Detector (FID)



Parameters

Raw Values Page Src5 9000 NMHC ASCII

no calibration active next automatic calibration cycle starts: 20190410 05:00:00

Number	Parameter	Value	Unit
S5C1	Methane	12.59	ppm
S5C2	NonMethaneHC	-0.310	ppm
S5C3	TotalHC	12.28	ppm
S5C5	Sample Flow	-0.1	cc/min
S5C6	Fuel Flow	0.0	cc/min
S5C7	Combustion Air Flow	-0.7	cc/min
S5C8	Det Methane Current	0.05763	pA
S5C9	Det Total Current	0.05464	pA
S5C10	Detector Temp	65.0	°C
S5C11	Oxidizer Temp	205.0	°C

Raw Values Page Src1 Sonimix 3080 recordum

Number	Parameter	Value	Unit
S1C1	Int Pressure	20.4	psi
S1C2	Out Pressure	20.4	psi
S1C3	Flow	0	cc/m
S1C4	Cell power	0	W
S1C5	Cell current	0.1	A
S1C6	Cell voltage	1.447	V
S1C7	P.S. Temperature	32.9	°C
S1C8	VTALIM1	24.55	V
S1C9	Water level	75	%
S1C10	Water quality	99	%
S1C11	Water quality	0.10	µS
S1C12	Alarm	0	

Calibration

2 points calibration (zero and span):

- zero level with external zero air
- span level with external methane and isobutylene cylinders

Preventive maintenance

NMHC Instrument

Water deionizer filter	4000 operating hours or 6 months
Deionisation water filter for external tank	Every 12 months
Carbon filter for external tank	Every 12 months
Verify the pressure sensors	8000 operating hours or 24 months
Check Water quality and tank status	15 days
Change pump / fans	Every 3 years
Condition Dryer Columns	Every 4 years
Zero air Outlet Filter Media	Every 12 months

Module compressed air

Filter	Every 12 months*
Pump rebuild kit for Compressor	Every 12 months

*The time interval depends strongly on the environmental conditions. Therefore, it can be considerably smaller or larger than mentioned!

Thank you for your attention!