

BAM1020 - Gast Pump Maintenance

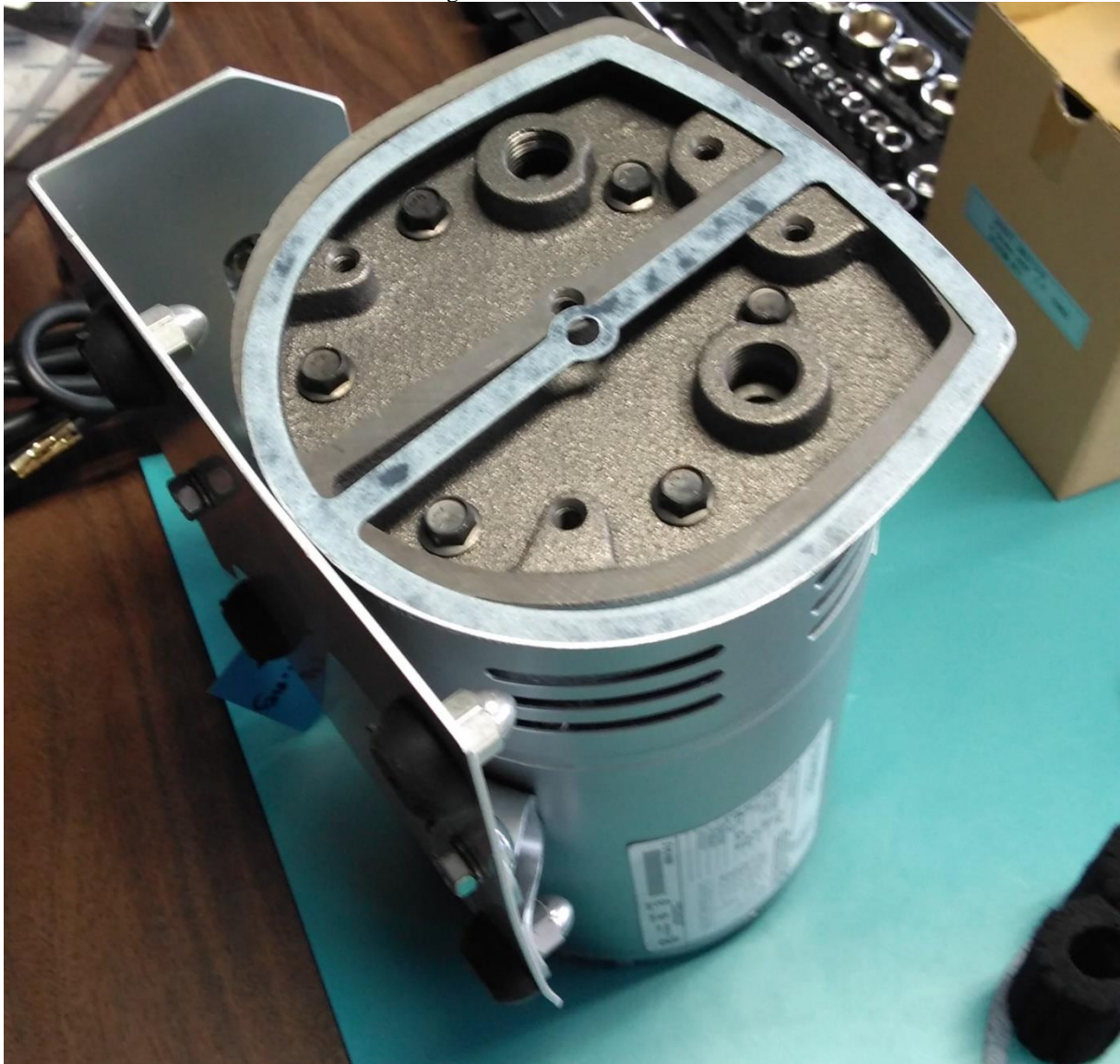
- 1- Tools you need
 - 2 adjustable wrenches
- 2- Turn off the BAM, unplug the electrical connection pump from the power outlet and from the BAM and the pneumatic connection from the BAM
- 3- Replace the filters



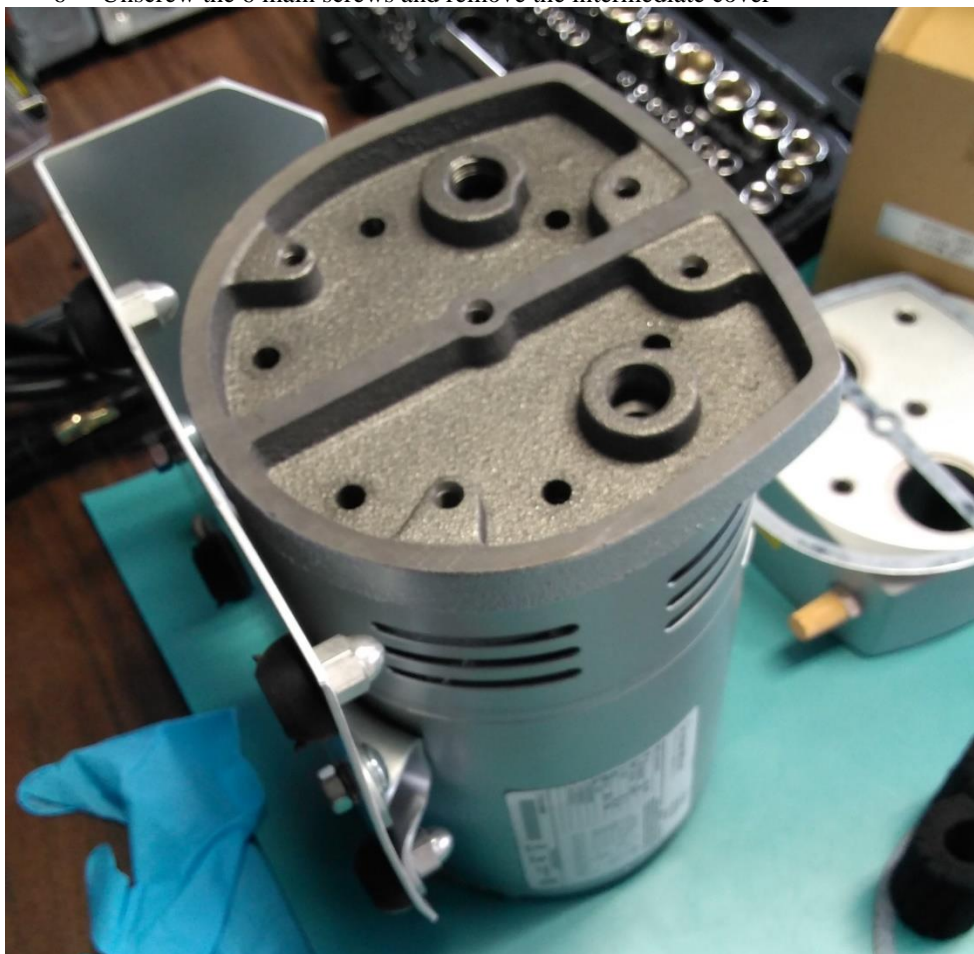
4- Unscrew the 5 front screws



5- Remove the front cover and the old gasket



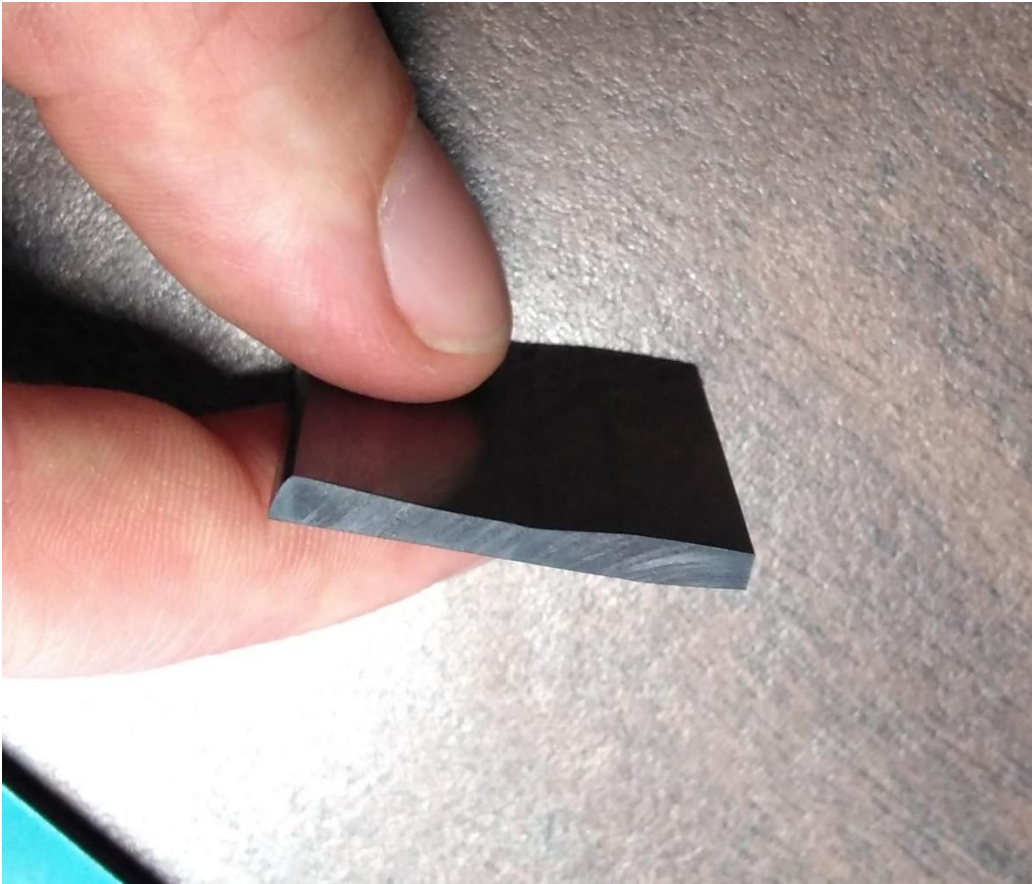
6- Unscrew the 6 main screws and remove the intermediate cover



7- Replace the 4 carbon blades



NB: You can periodically check if the carbon blades are in good condition. If they are worn out, they look thinner in the middle



8- Rebuild the pump with the new gasket, step by step the opposite way