

Step 1

Remove the cover:

Unscrew all bolts and unplug the blade connector, see therefore the picture below.

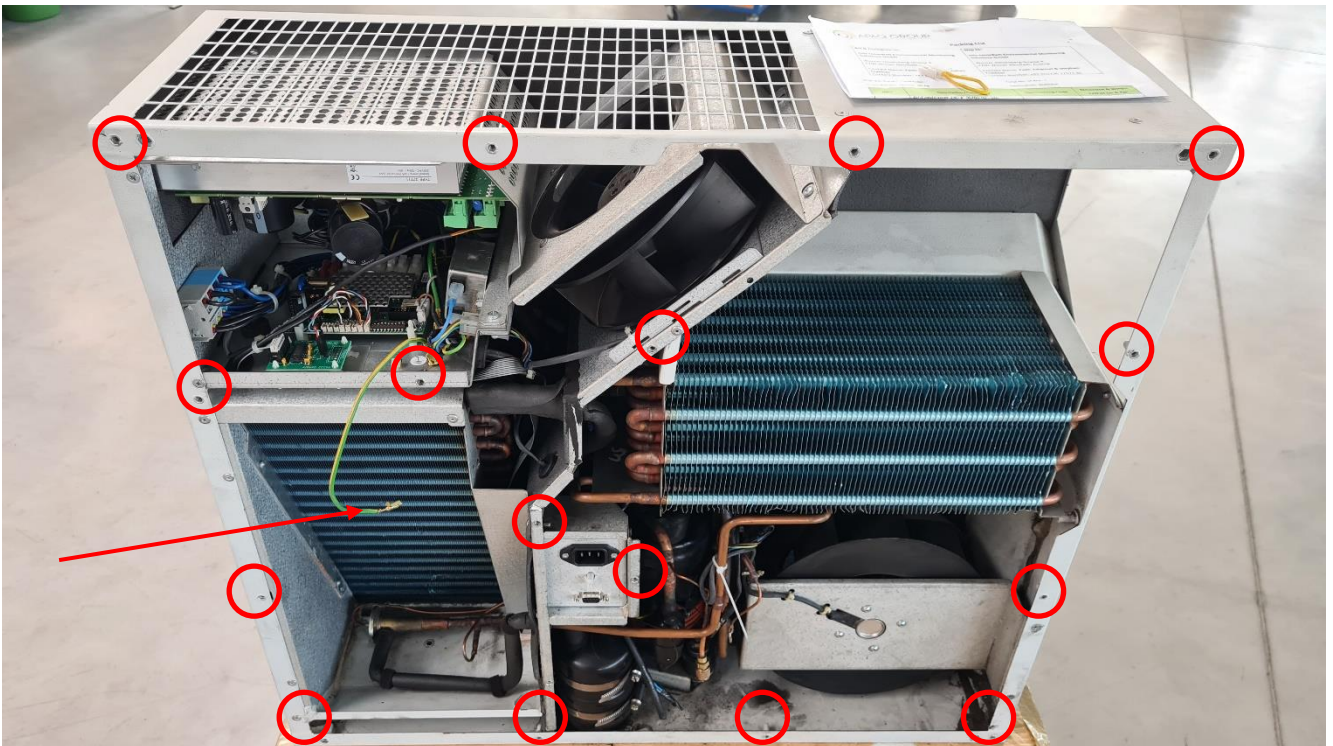



Figure 1 Seifert air-condition unit with removed cover. Arrow indicating the blade connector. Circles indicate the location of the removed screws.

	Date: 08.06.2022
	Revision: 1.0
Refrigerant refill guide: HC Seifert AC unit big	Seite 2 von 4
Aircondition	

Step 2

Find the location of the U-Pipe for the manual refill.

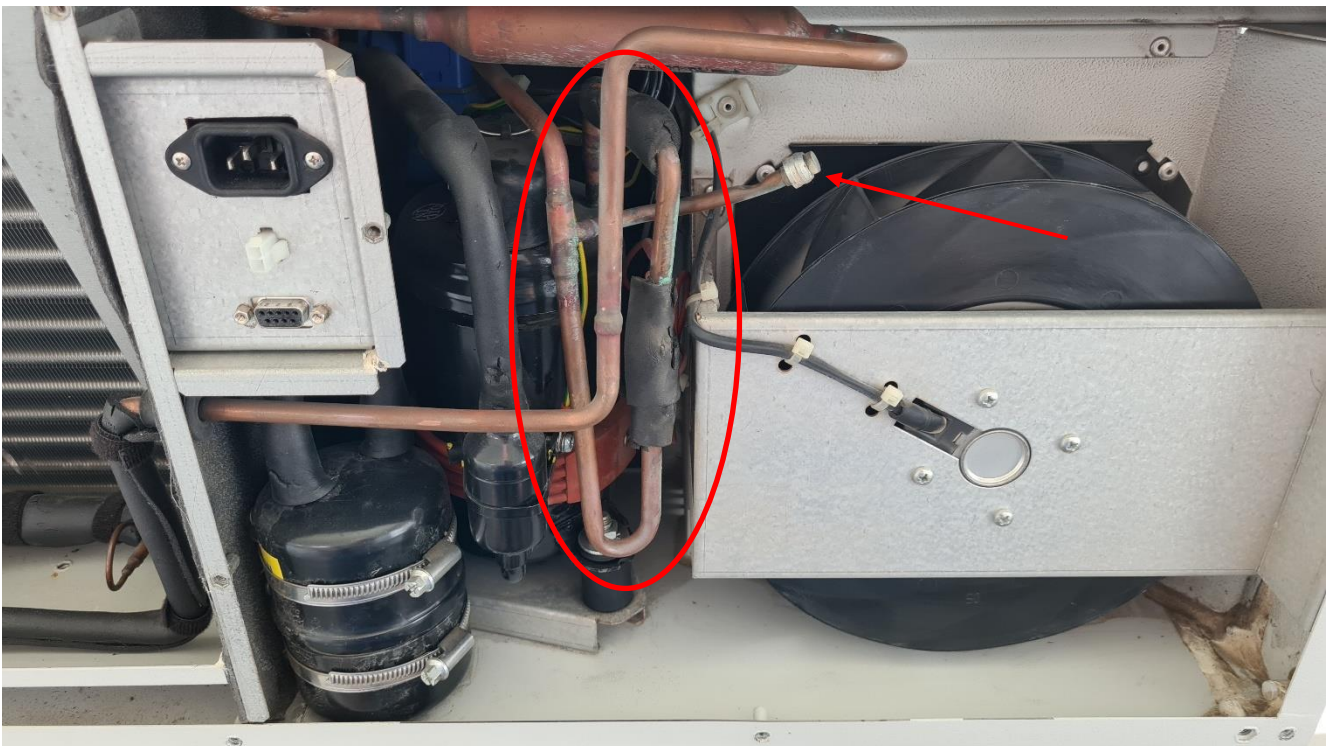



Figure 2 Seifert air-condition unit: Compressor room. Reference air-condition unit, factory status. The circle shows the location of the U-bend type pipe. The red arrow shows the presealed pipe for manual refill.

	Date: 08.06.2022
	Revision: 1.0
	Refrigerant refill guide: HC Seifert AC unit big
Aircondition	Seite 3 von 4

Step 3:

Let the air-condition unit to be checked by an authorized technician only. The unit must be leak checked, emptied, weighted, and refilled with a specific amount and type of climate gas as shown on the sticker/label in the next figure.

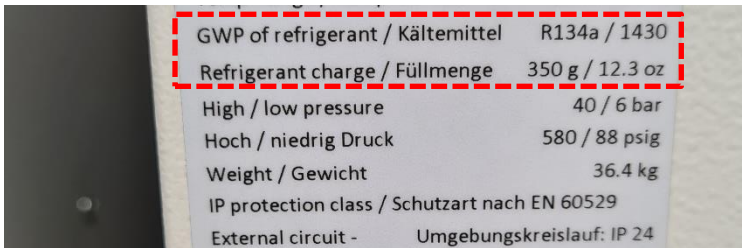


Figure 3 Sticker with information about the type and necessary amount of refrigerant.

Step 4:

If no external connection for a manual refill is available, you can use the indicated area as seen in the picture below.

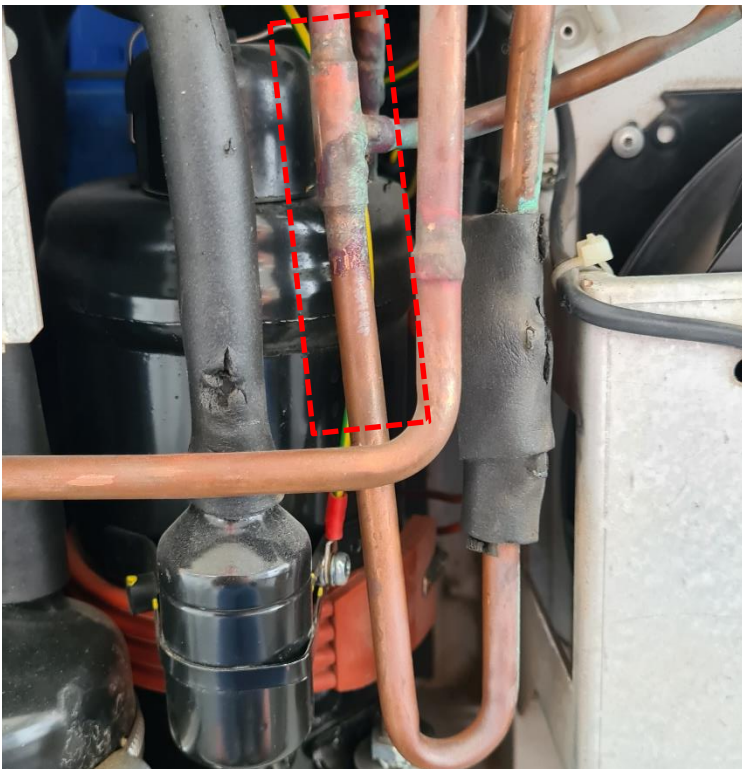



Figure 4 Close up of the location where a connection for a manual refill can be established.

	Date: 08.06.2022
	Revision: 1.0
Refrigerant refill guide: HC Seifert AC unit big	Seite 4 von 4
Aircondition	

Step 5:

After refill, reinstall the blade connector and reinstall the cover:

Do a quick check if the air-condition unit is running, to do so you need a power connector and a bridge/cable. The fans should spin if the power cable is connected, and the compressor should switch on if the jumper/bridge is connected. If the compressor is not running, you can use a heating gun (on low power mode!) to force it switch on. A running compressor is indicated if the copper pipes vibrate and if the outlets get cold and warm.



Figure 5 From top to bottom: Power plug, bridge connector and RS232 connector.