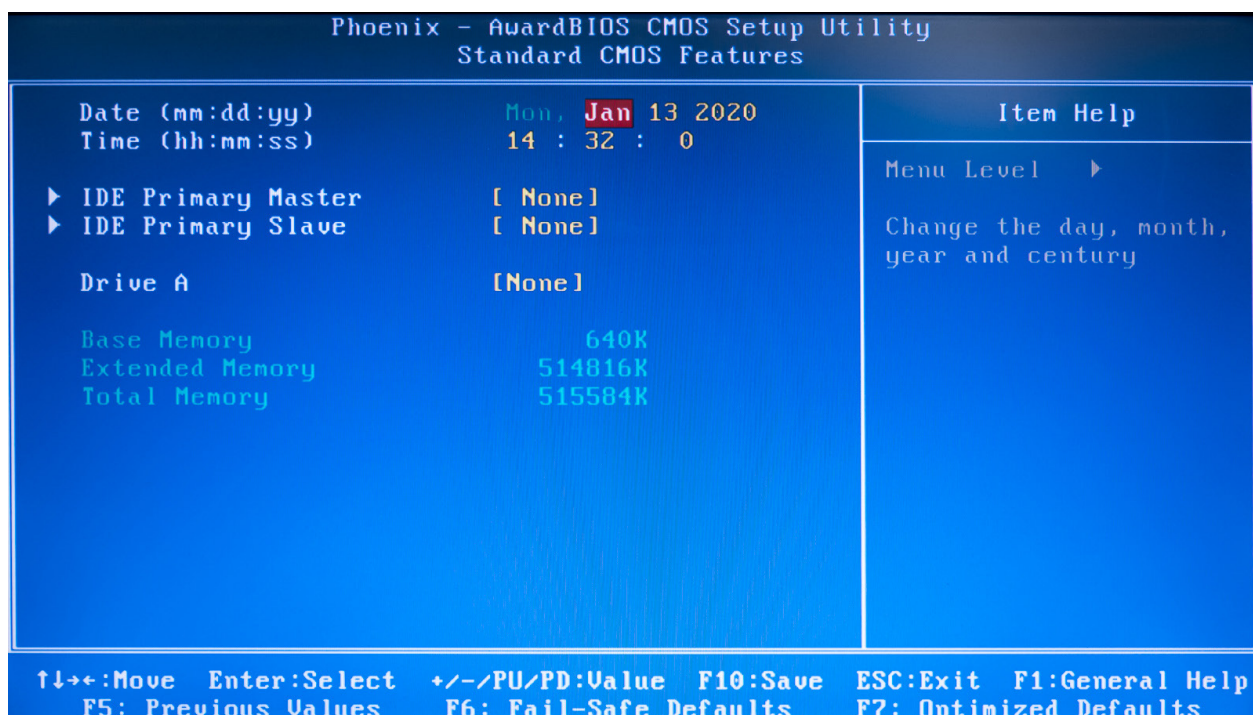
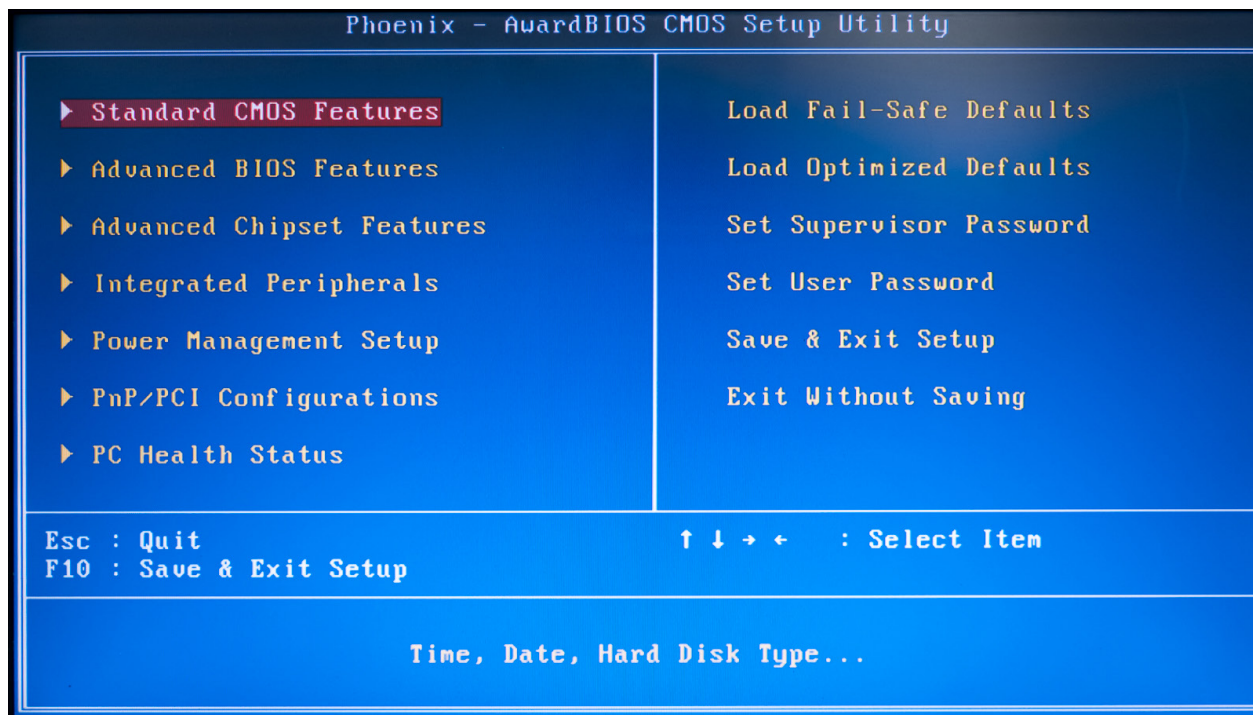
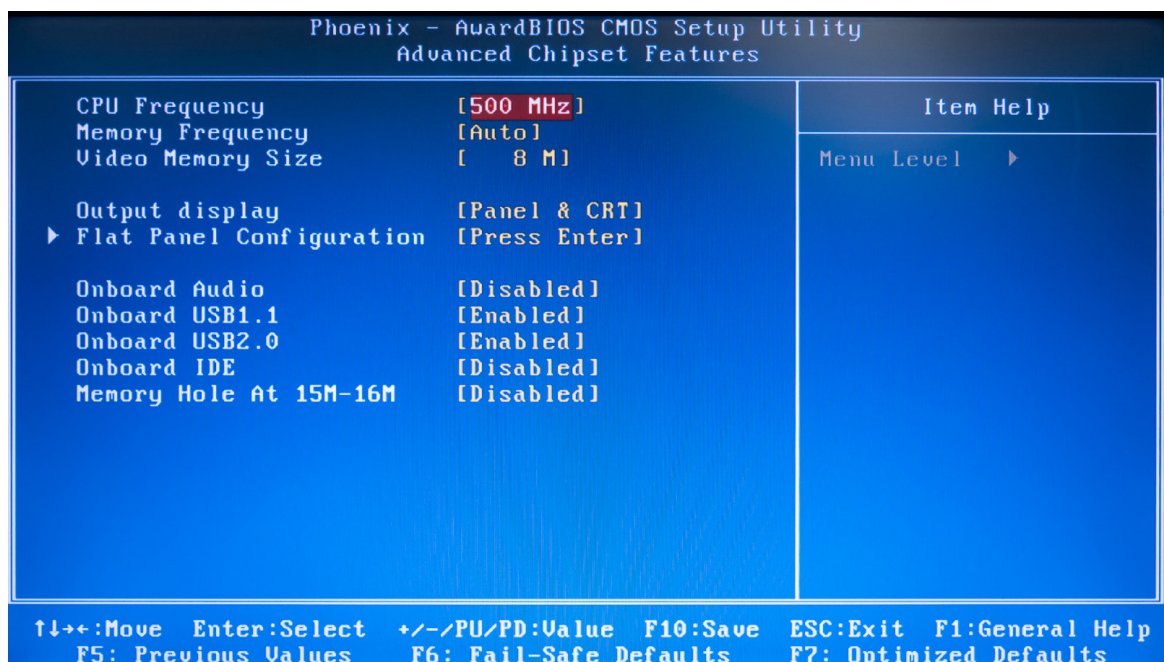
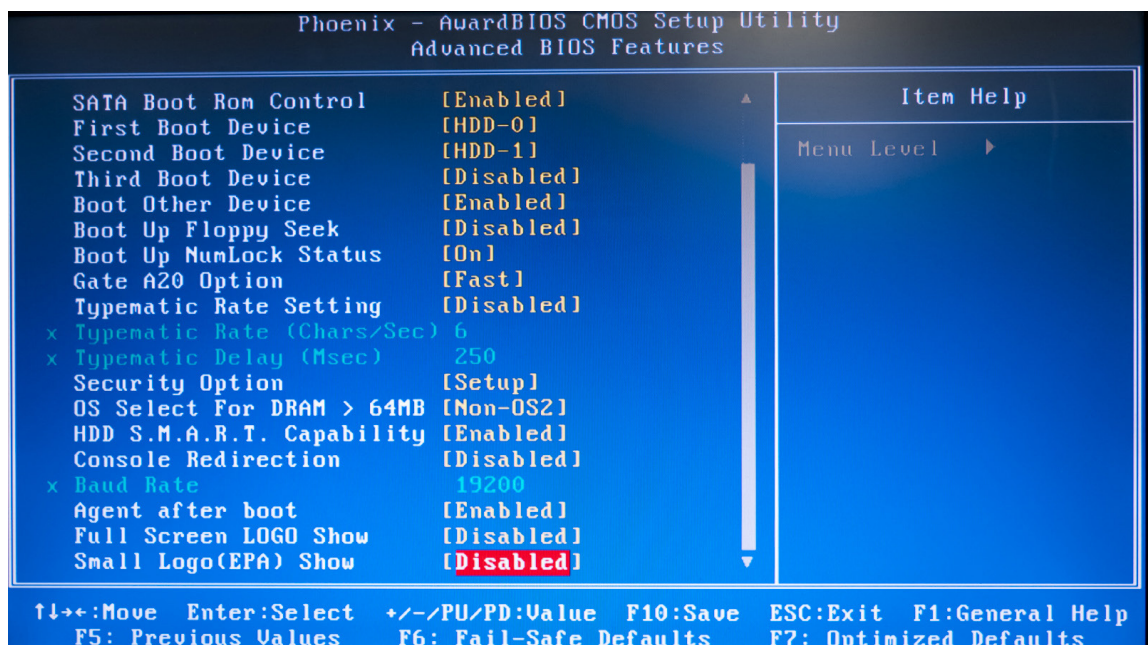
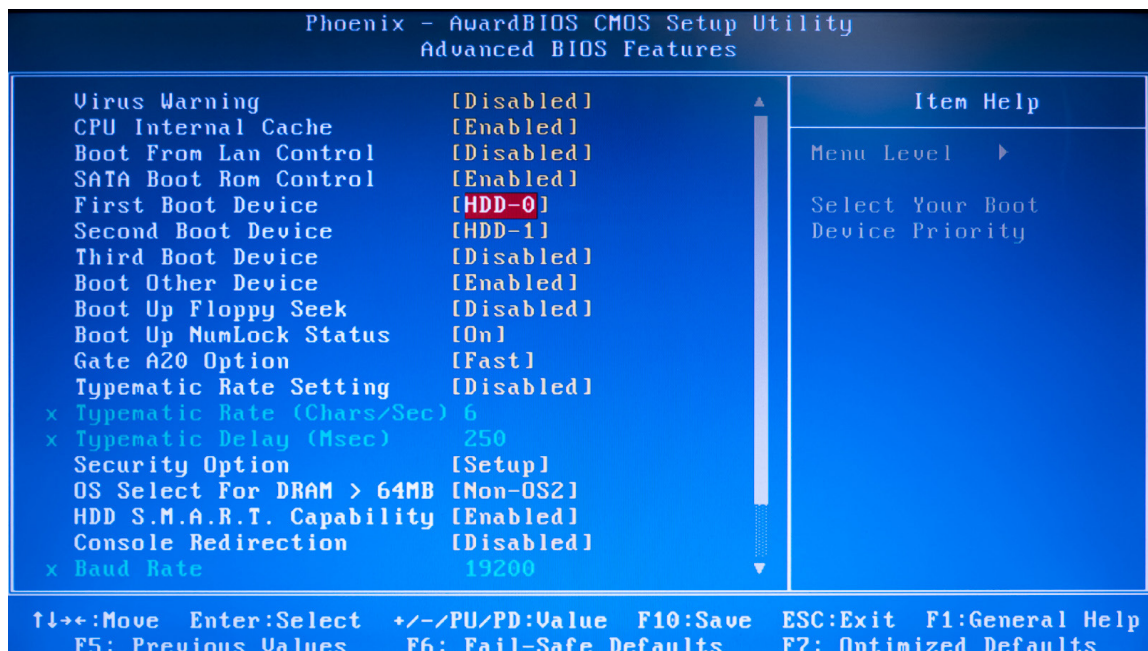


BIOS Setup LX800

There are a few situations where you need to check the BIOS setting of the airpointer: If an airpointer does not boot, a lost BIOS setting could be the reason. When a computer board is delivered as a spare it should be correctly configured, maybe you want to check. You need a VGA screen and a keyboard to do this check. Connect both to the airpointer PC and start up the airpointer, as soon you here the beep of the board press the button several times until you see the blue BIOS screen like below. Check the settings, if you see a difference correct it and store the change with the <F10> button.

(14.Jan 2020, AM)





Phoenix - AwardBIOS CMOS Setup Utility			
Integrated Peripherals			
Master Drive PIO Mode	[Auto]	Item Help	
Slave Drive PIO Mode	[Auto]		
IDE Primary Master UDMA	[Auto]	Menu Level ▶	
IDE Primary Slave UDMA	[Auto]		
IDE DMA transfer access	[Enabled]		
▶ IT8888 ISA Decode IO	[Press Enter]		
▶ IT8888 ISA Decode Memory	[Press Enter]		
IDE HDD Block Mode	[Enabled]		
Onboard FDC Controller	[Disabled]		
Onboard Serial Port 1	[3F8/IRQ4]		
Onboard Serial Port 2	[2F8/IRQ3]		
Onboard Serial Port 3	[Disabled]		
Onboard Parallel Port	[Disabled]		
x Parallel Port Mode	SPP		
x EPP Mode Select	EPP1.7		
x ECP Mode Use DMA	3		
↑↓←→:Move Enter:Select +/-/PU/PD:Value F10:Save ESC:Exit F1:General Help			
F5: Previous Values F6: Fail-Safe Defaults F7: Optimized Defaults			

Phoenix - AwardBIOS CMOS Setup Utility		
IT8888 ISA Decode IO		
Decode I/O Space 0	[Enabled]	Item Help Menu Level ▶
Decode I/O Speed 0	[Medium Speed]	
Decode I/O Addr. 0 [15:0]	[0100]	
Decode I/O Size 0	[32 Bytes]	
Decode I/O Space 1	[Enabled]	
Decode I/O Speed 1	[Medium Speed]	
Decode I/O Addr. 1 [15:0]	[0140]	
Decode I/O Size 1	[32 Bytes]	
Decode I/O Space 2	[Enabled]	
Decode I/O Speed 2	[Medium Speed]	
Decode I/O Addr. 2 [15:0]	[0280]	
Decode I/O Size 2	[32 Bytes]	
Decode I/O Space 3	[Disabled]	
x Decode I/O Speed 3	Medium Speed	
x Decode I/O Addr. 3 [15:0]	0340	
x Decode I/O Size 3	32 Bytes	
Decode I/O Space 4	[Disabled]	
x Decode I/O Speed 4	Medium Speed	
x Decode I/O Addr. 4 [15:0]	0300	
↑↓←→:Move Enter:Select +/-/PU/PD:Value F10:Save ESC:Exit F1:General Help F5: Previous Values F6: Fail-Safe Defaults F7: Optimized Defaults		

Phoenix - AwardBIOS CMOS Setup Utility		
IT8888 ISA Decode IO		
Decode I/O Speed 1	[Medium Speed]	Item Help Menu Level ▶
Decode I/O Addr. 1 [15:0]	[0140]	
Decode I/O Size 1	[32 Bytes]	
Decode I/O Space 2	[Enabled]	
Decode I/O Speed 2	[Medium Speed]	
Decode I/O Addr. 2 [15:0]	[0280]	
Decode I/O Size 2	[32 Bytes]	
Decode I/O Space 3	[Disabled]	
x Decode I/O Speed 3	Medium Speed	
x Decode I/O Addr. 3 [15:0]	0340	
x Decode I/O Size 3	32 Bytes	
Decode I/O Space 4	[Disabled]	
x Decode I/O Speed 4	Medium Speed	
x Decode I/O Addr. 4 [15:0]	0300	
x Decode I/O Size 4	64 Bytes	
Decode I/O Space 5	[Disabled]	
x Decode I/O Speed 5	Medium Speed	
x Decode I/O Addr. 5 [15:0]	0A79	
x Decode I/O Size 5	1 Bytes	
↑↓←→:Move Enter:Select +/-/PU/PD:Value F10:Save ESC:Exit F1:General Help F5: Previous Values F6: Fail-Safe Defaults F7: Optimized Defaults		

Phoenix - AwardBIOS CMOS Setup Utility		
Power Management Setup		
AC Power mode	[ATX]	Item Help Menu Level ▶ BIOS emulated AC Power mode. AT-No S1~S5 support.
HDD Power Down	[Disabled]	
Soft-Off by PWR-BTTN	[Instant-Off]	
▶ RTC Alarm Item	[Press Enter]	
↑↓→←:Move Enter:Select +/~/PU/PD:Value F10:Save ESC:Exit F1:General Help F5: Previous Values F6: Fail-Safe Defaults F7: Optimized Defaults		

Phoenix - AwardBIOS CMOS Setup Utility		
PnP/PCI Configurations		
PNP OS Installed	[Yes]	<div>Item Help</div> <div>Menu Level ▶</div> <div>Select Yes if you are using a Plug and Play capable operating system Select No if you need the BIOS to configure non-boot devices</div>
Reset Configuration Data	[Disabled]	
Resources Controlled By	[Manual]	
▶ IRQ Resources	[Press Enter]	
▶ DMA Resources	[Press Enter]	
▶ Memory Resources	[Press Enter]	
PCI/UGA Palette Snoop	[Enabled]	
<div>↑↓→←:Move Enter:Select +/-/PU/PD:Value F10:Save ESC:Exit F1:General Help</div> <div>F5: Previous Values F6: Fail-Safe Defaults F7: Optimized Defaults</div>		

Phoenix - AwardBIOS CMOS Setup Utility		
IRQ Resources		
IRQ-3 assigned to	[PCI/ISA PnP]	<div>Item Help</div> <div>Menu Level ▶</div> <div>Legacy ISA for devices compliant with the original PC AT bus specification, PCI/ISA PnP for devices compliant with the Plug and Play standard whether designed for PCI or ISA bus architecture</div>
IRQ-4 assigned to	[PCI/ISA PnP]	
IRQ-5 assigned to	[Legacy ISA]	
IRQ-7 assigned to	[Legacy ISA]	
IRQ-10 assigned to	[Legacy ISA]	
IRQ-11 assigned to	[PCI/ISA PnP]	
<div>↑↓→←:Move Enter:Select +/-/PU/PD:Value F10:Save ESC:Exit F1:General Help</div> <div>F5: Previous Values F6: Fail-Safe Defaults F7: Optimized Defaults</div>		