

## Nephelometer cleaning procedure

- Shut down the Airpointer (from service menu – shut down).
- Unmount the Heated tube for particles.
- Disconnect flat cable with IDC connector and tube to DFU filter and pump.
- Unscrew 4 Allen screws and take the nephelometer out (when the last screw is unscrewed the nephelometer can fall down!).



Mark the position of the adapter plate and unscrew the holding tube (wrench 32mm).



- Below the adapter plate is the seal ring, take care not to lose it!



- Parts of the mounting adapter.

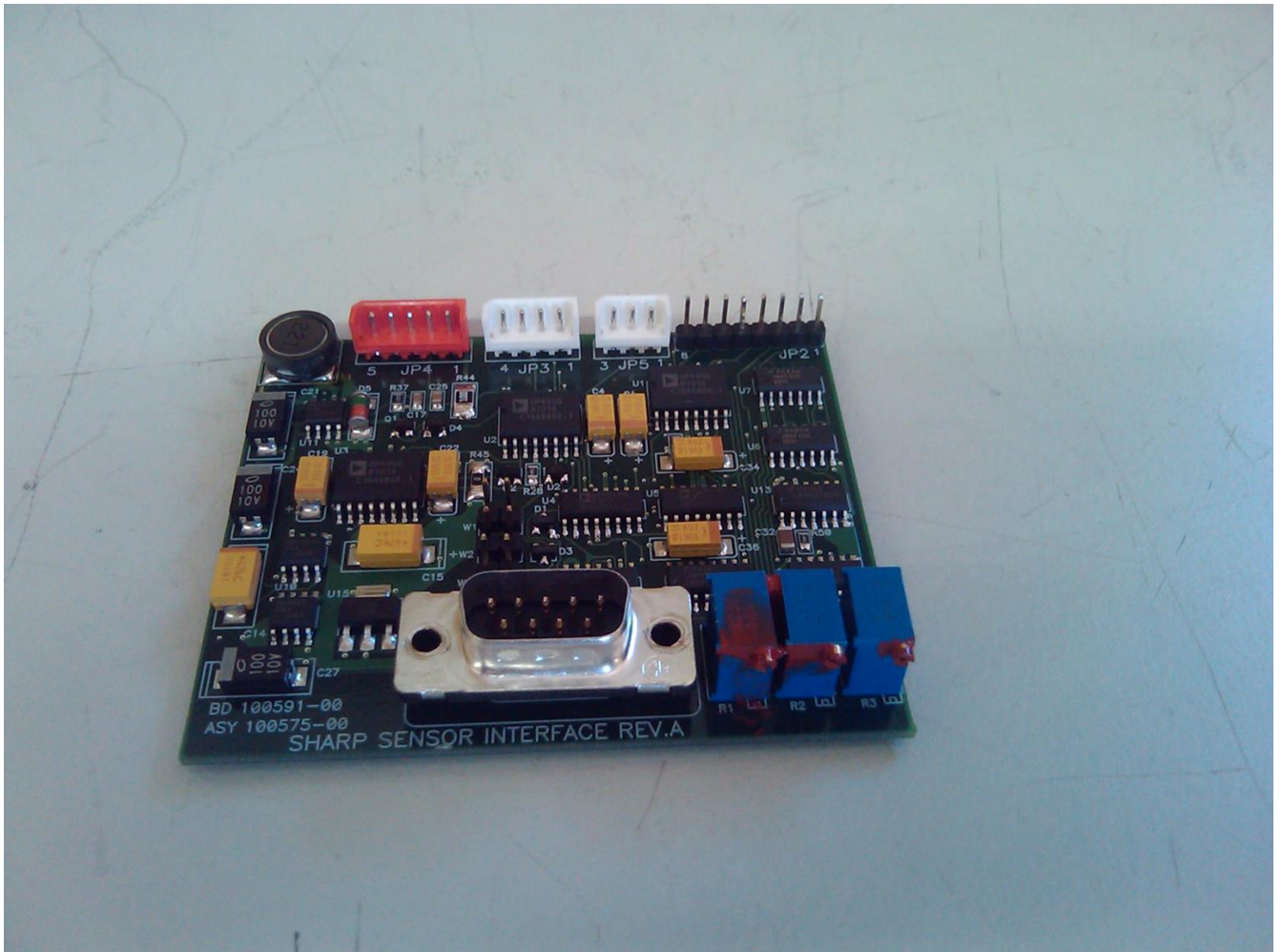




- Allen key 5/32 (4mm fits perfectly) is used to open the nephelometer.
- When the nephelometer is opened, it can be cleaned with a lint free tissue, earbud or similar (do not use alcohol or anything that can leave some residue) so carefully blow the interior with compressed air. Take care not to damage the small protruding sensor.



- Assemble the nephelometer in opposite direction of disassembling.



When inserting the nephelometer take care of the pins on the right side of the board not to make any contact. From this board the 3-pin connector can be disconnected. This is the moisture sensor connection, this sensor is not used in Airpointer

After the unit has been assembled the zero point needs to be checked or calibrated. Place the zero-air filter on top of the dust sampling system. Let the instrument stabilize and adjust PartSignalIn to 400mV using the most left potentiometer R3 on the board shown above.